



Rab 6A Polyclonal Antibody

| | |
|---------------------------|--|
| Catalog No | YP-Ab-16205 |
| Isotype | IgG |
| Reactivity | Human;Mouse;Rat |
| Applications | WB;IHC;IF;ELISA |
| Gene Name | RAB6A |
| Protein Name | Ras-related protein Rab-6A |
| Immunogen | The antiserum was produced against synthesized peptide derived from human RAB6A. AA range:113-162 |
| Specificity | Rab 6A Polyclonal Antibody detects endogenous levels of Rab 6A protein. |
| Formulation | Liquid in PBS containing 50% glycerol, 0.5% BSA and 0.02% sodium azide. |
| Source | Polyclonal, Rabbit,IgG |
| Purification | The antibody was affinity-purified from rabbit antiserum by affinity-chromatography using epitope-specific immunogen. |
| Dilution | WB: 1/500 - 1/2000. IHC: 1/100 - 1/300. ELISA: 1/20000.. IF 1:50-200 |
| Concentration | 1 mg/ml |
| Purity | ≥90% |
| Storage Stability | -20°C/1 year |
| Synonyms | RAB6A; RAB6; Ras-related protein Rab-6A; Rab-6 |
| Observed Band | 24kD |
| Cell Pathway | Golgi apparatus membrane ; Lipid-anchor . BICD2 facilitates its targeting to Golgi apparatus membrane. .; [Isoform 1]: Golgi apparatus membrane ; Lipid-anchor .; [Isoform 2]: Golgi apparatus membrane ; Lipid-anchor . |
| Tissue Specificity | Ubiquitous. |
| Function | function:Protein transport. Regulator of membrane traffic from the Golgi apparatus towards the endoplasmic reticulum (ER). Has a low GTPase activity.;PTM:Phosphorylated upon DNA damage, probably by ATM or ATR.;similarity:Belongs to the small GTPase superfamily. Rab family.;subunit:Interacts with SCYL1BP1. Interacts with VSP52 and RABGAP1. Isoform 1 interacts with RAB6KIFL but not isoform 2. Isoforms 1 and 2 interact with BICD1 and BICD2. Interacts with TMF1.;tissue specificity:Ubiquitous., |
| Background | This gene encodes a member of the RAB family, which belongs to the small GTPase superfamily. GTPases of the RAB family bind to various effectors to regulate the targeting and fusion of transport carriers to acceptor compartments. This protein is located at the Golgi apparatus, which regulates trafficking in both a retrograde (from early endosomes and Golgi to the endoplasmic reticulum) and an anterograde (from the Golgi to the plasma membrane) directions. Myosin II is an |



effector of this protein in these processes. This protein is also involved in assembly of human cytomegalovirus (HCMV) by interacting with the cellular protein Bicaudal D1, which interacts with the HCMV virion tegument protein, pp150. Multiple alternatively spliced transcript variants encoding different isoforms have been identified. [provided by RefSeq, Aug 2011],

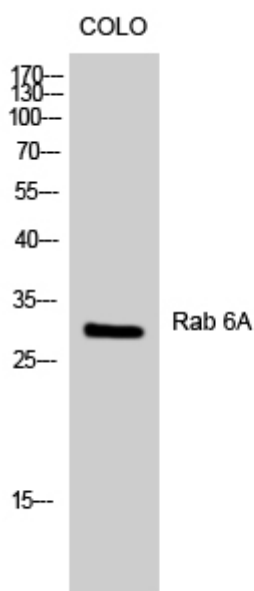
matters needing attention

Avoid repeated freezing and thawing!

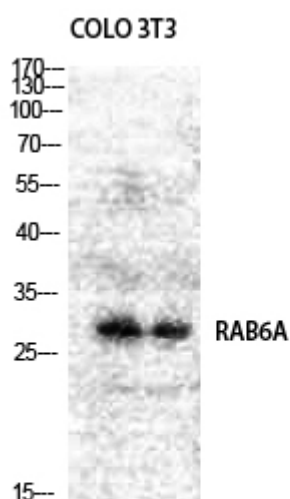
Usage suggestions

This product can be used in immunological reaction related experiments. For more information, please consult technical personnel.

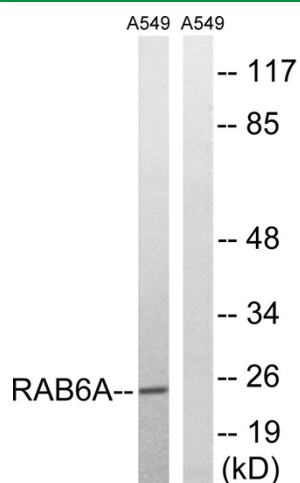
Products Images



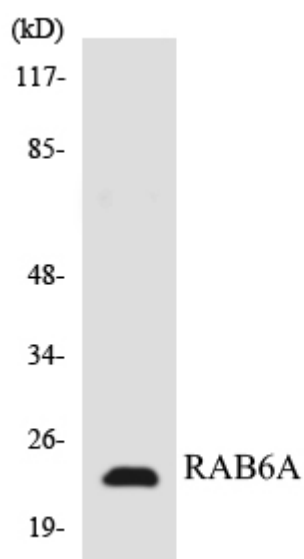
Western Blot analysis of COLO cells using Rab 6A Polyclonal Antibody diluted at 1:1000



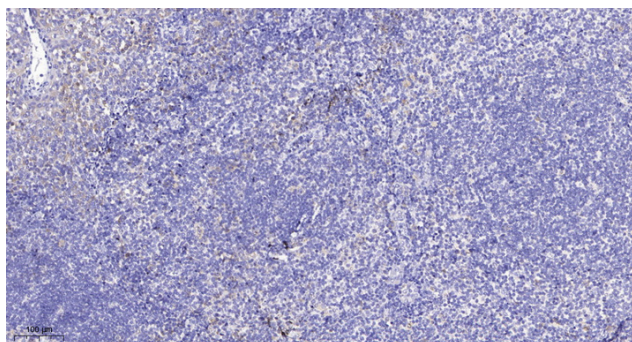
Western Blot analysis of COLO NIH-3T3 cells using Rab 6A Polyclonal Antibody diluted at 1:1000



Western blot analysis of lysates from A549 cells, using RAB6A Antibody. The lane on the right is blocked with the synthesized peptide.



Western blot analysis of the lysates from HT-29 cells using RAB6A antibody.



Immunohistochemical analysis of paraffin-embedded human tonsil. 1, Antibody was diluted at 1:200(4° overnight). 2, Tris-EDTA,pH9.0 was used for antigen retrieval. 3,Secondary antibody was diluted at 1:200(room temperature, 30min).